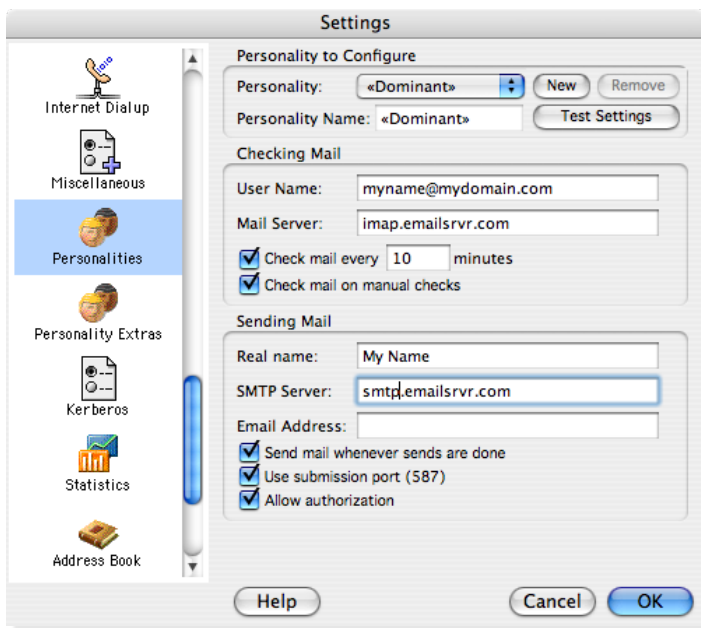


# Setting Up Eudora<sup>®</sup> for Mac (Based on version 6.2.4)

**Note:** During 2007, Eudora will become an open source email application and will be built upon the same foundation as Mozilla's Thunderbird. The interface, however, is expected to remain similar to what it is now. For example, additional email accounts in Eudora are known as "Personalities."

## Setting Up an IMAP Email Account

1. Select [Window / Personalities](#).
2. Click [New](#). This will deliver an "untitled" personality bearing a personality icon.
3. In the [Name](#) box, enter a name for the personality and press [Return](#) or [Enter](#) to continue.
4. Make sure that the [Personality Name](#) is still selected, and click [Edit](#).



5. In the dialog for your new Personality, enter the following under [Checking Mail](#):
  - [User Name](#)—Enter your entire email address (e.g., *myname@mydomain.com*),.
  - [Mail Server](#)—Enter *imap.emailsrvr.com*.
  - [Check mail every](#)—Enter how long you want Eudora to check for new messages. The default setting is 10 minutes.

**Note:** Another option, [Check mail on manual checks](#), is

automatically selected so you can look for new messages without waiting for the next scheduled session.

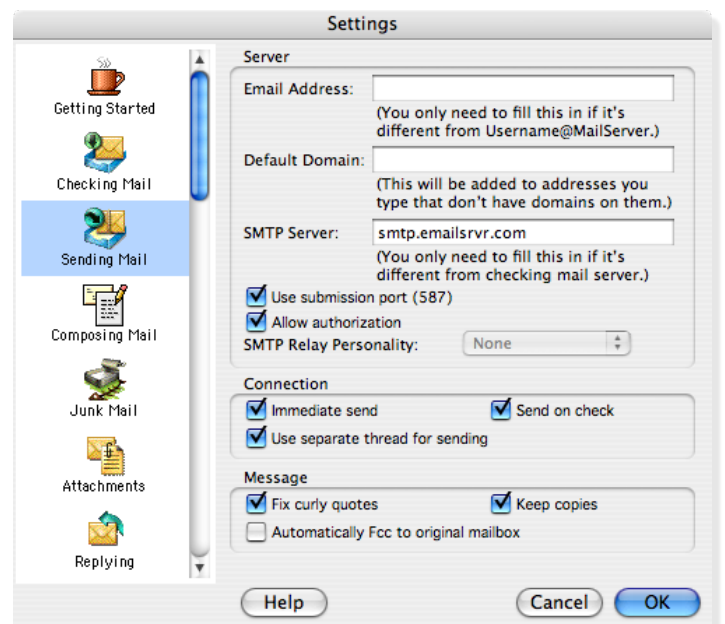
6. In the dialog for your Personality under [Sending Mail](#), you'll need to enter the following:
  - [Real Name](#)—Enter your name or company name, depending on which you'd like to display in your outgoing messages.
  - [SMTP Server](#)—Enter *smtp.emailsrvr.com* for the outgoing server.
  - [Incoming mail server](#)—Enter the IMAP server name: *imap.emailsrvr.com*
  - [Email Address](#)—This field can be left blank unless it is different from your User Name.
  - Check [Send mail whenever sends are done](#), to speed up the process of sending your mail.
  - Click [Allow authorization](#) to have your user name and password entered when sending messages.

**Note:** You will see a password prompt the first time you send messages, which will then be stored in Apple's Keychain application.

7. Click the [OK](#) to store your settings

## Changing Outgoing (SMTP) Servers

If you experience trouble sending mail, it is likely that your ISP is blocking the default Port 25; this is a very common process that's designed to protect the service from



spammers. To fix this problem, follow these steps:

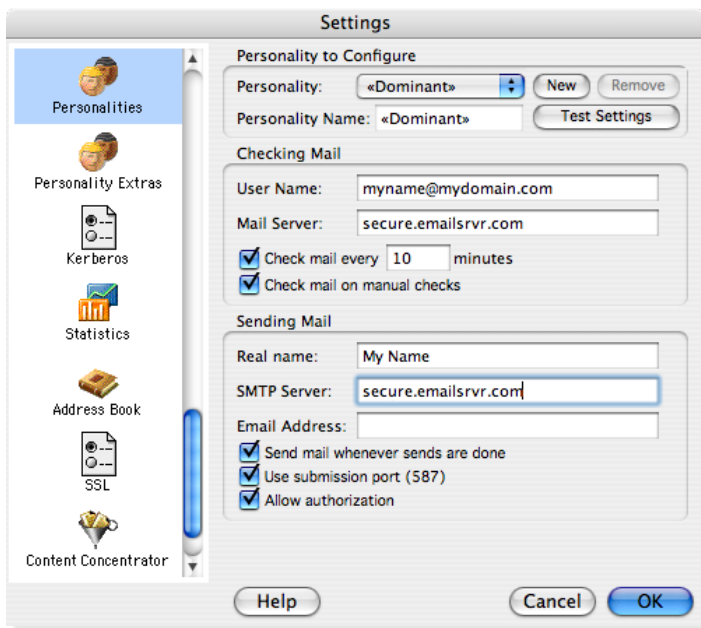
1. Select **Special / Settings**.
2. Select **Sending Mail** from the scrolling list at the left.
3. Click **Use submission port (587)**.
4. Click **OK** to save your settings.

### Assigning SSL Secure Server Settings

After setting up your mail account, you can follow the steps below to adjust your IMAP account settings to use the secure (SSL) server. The SSL protocol allows you to send and receive secure email messages. It does not, however, secure your messages on their passage from your hosted email servers to other email servers.

#### To use the secure incoming mail server

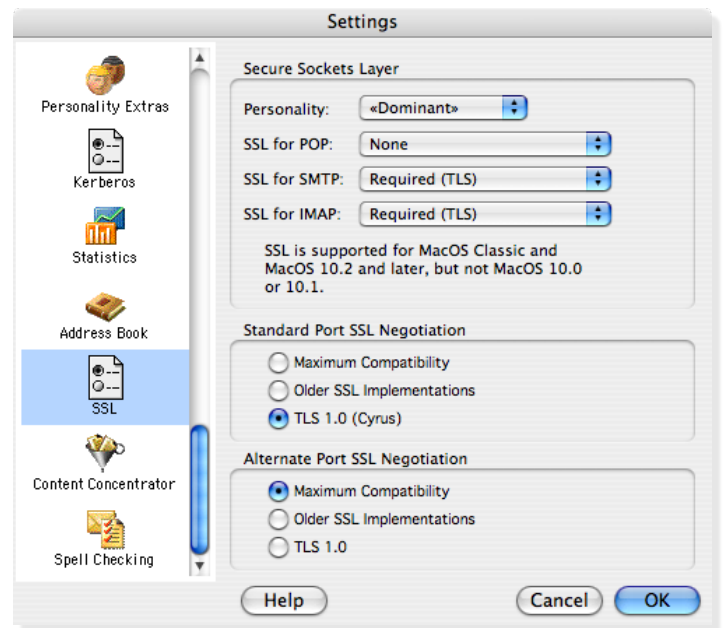
1. Select **Special / Settings**.
2. Select **Personalities** from the scrolling list at the left.
3. In your selected **Personality to Configure** window, change the **Mail Server** to *secure.emailsrvr.com*.



4. To use secure your outgoing mail, click on **SSL** from the scrolling list and select **Required (TLS)** from the **SSL for IMAP** drop-down menu.
5. Click **OK** to store your settings.

#### To use the secure outgoing mail server

1. Select **Special / Settings**.
2. Select **Personalities** from the scrolling list at the left.
3. In your selected **Personality to Configure** window, change the **SMTP Server** at the lower half of the window to: *secure.emailsrvr.com*.



4. To use secure your outgoing mail, click on **SSL** from the scrolling list and select **Required (TLS)** from the **SSL for SMTP** drop-down menu.
5. Click **OK** to store your settings.

#### Checking for Mail Automatically

1. Select **Special / Settings**.
2. Select **Checking Mail** from the scrolling list at the left.
3. Click **Check for mail every...minute(s)** and enter the number of minutes you'd like your messages checked. The standard or default setting Eudora is 10 minutes.
4. Click **Don't check when using battery** to save power, because the process will cause your hard drive to work harder.
5. Click **OK** to complete the setup process.

